



The Original Touch Up Company™

# Match-All™ Stain and Grain System Instruction Sheet



### Color #180

Mix: #8 2 drops  
#9 3 drops  
#10 5 drops



### Color #181

Mix: #1 4 drops  
#7 3 drops  
#8 2 drops  
#9 3 drops  
#10 3 drops



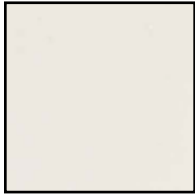
### Color #182

Mix: #7 5 drops  
#8 3 drops



### Color #183

Mix: #1 4 drops  
#5 1 drop  
#8 2 drops  
#10 1 drop



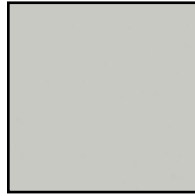
### Color #184

Mix: #1 72 drops  
#7 1 drop



### Color #185

Mix: #1 96 drops  
#6 2 drops  
#7 1 drop



### Color #186

Mix: #1 60 drops  
#B 1 drop  
#7 2 drops



### Color #187

Mix: #1 72 drops  
#B 5 drops  
#6 4 drops



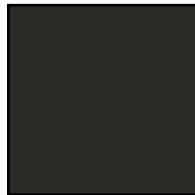
### Color #188

Mix: #4 4 drops  
#7 2 drops  
#9 2 drops



### Color #189

Mix: #4 10 drops  
#7 7 drops  
#9 10 drops



### Color #190

Mix: #7 10 drops  
#5 7 drops  
#8 1 drop



### Color #191

Mix: #7 24 drops  
#8 5 drops

## Introduction

The materials contained in this system are designed to enable the user to quickly and accurately replace background color and grain to damages on wood projects. The color guide brings you close quickly and easily and makes the job easier for all levels of repair technicians.

## Replacing Background Color

1. Be sure the area to be colored is clean and free of all wax, oil and other contaminants by wiping with Mohawk Wax Wash™ Remover.
2. Choose the color that is closest to the background color surrounding the repair area.
3. Remove the Match-All™ Staining Liquid Colors listed on the formula from the kit box.
4. Shake each jar of Match-All™ Stain gently to assure proper blending and open the jars.
5. Locate the Match-All™ Tinting Loop and the Match-All™ Tinting Glass. Following the color formula carefully measure the number of drops of each color and place them on to the mixing glass (A drop is a full loop on the measuring tool.) Release the drop from the loop by tapping it on the glass. Clean the loop as you move from color to color using the Match-All™ Brush Cleaner and a soft cloth so as NOT TO CONTAMINATE the staining colors.
6. When all required drops are in the mixing glass, blend them together using the short bristled Staining Brush.
7. Wipe excess stain from the brush with a cloth or by brushing on a separate surface. Test the color on the damaged surface by brushing a small area. If color needs adjustment, it can be tinted with any of the Match-All™ stains. If a full drop is not required, a partial drop (or tint drop) can be obtained by dipping only the edge of the measuring loop into the stain and tapping it next to your color blend. Mix and retest color. You may want to record your formula and suite #/Manufacturers Code.
8. Brush the correct color onto the repair area and feather the edges. Let dry 3-4 minutes.

**NOTE:** If stain color is settling up too quickly or has thickened on the mixing surface, add a drop of stain retarder to the blend and mix. Color intensity may be reduced using the Match-All™ Clear Base. Using the Clear Base reduces color strength without reducing stain solids.

## Replacing the Grain

Grain lines can be replaced using the Match-All™ Graining Liquid and the long bristled Graining Brush. The Match-All™ Grain Liquid Colors can be used straight, if one of the colors matches, or they can be blended with other Graining Liquid Colors.

## Follow These Steps For Application

1. Place the clean Match-All™ Tinting Glass over the repair
2. Choose the Match-All™ Graining Liquid color that is the closest and place a drop onto the glass mixing surface.
3. Spread a thin line on the glass using the Graining Brush and observe the color compared to surrounding grain.
4. If the color matches, carefully brush grain color over the repair, duplicating natural grain in the area. If the color does not match, blend colors and recheck.
5. After allowing repair 3-5 minutes to dry, apply a light coat of Mohawk Aerosol Sanding Sealer and allow to dry.



The Original Touch Up Company™

For more information about these products contact:  
Mohawk Finishing Products  
Division of RPM Wood Finishes Group, Inc.  
P.O. Box 22000  
Hudson, NC 28603  
800-545-0047  
www.mohawkfinishing.com

Z115-3009  
5th Edition

**Follow These Steps For Application - Continued**

6. Apply a light coat of the correct sheen aerosol clear finish, such as Ultra® Flo or any of the Mohawk Clear Toners.

**NOTE:** Be sure the measuring tool and brushes are cleaned and all jar lids are tightly closed before returning to the kit box.

**Contents and Re-Ordering Information**

M900-4600	Match-All™ Tinting Guide	M466-6010	Match-All™ Retarder 1 oz.
M900-4601	Match-All™ Tinting Loop	M466-6020	Match-All™ Clear Base 1 oz.
M900-4602	Match-All™ Tinting Glass	M466-6030	Match-All™ Brush Cleaner 1 oz.
M900-1271	Graining Brush	M466-6035	Match-All™ Brush Cleaner 16 oz.
M901-3491	Staining Brush	M881-4600	Match-All™ Staining and Graining System

**NOTE: COLORS ARE APPROXIMATE REPRESENTATIONS OF ACTUAL COLORS USING MODERN PROCESS TECHNIQUES. VARIATIONS MAY OCCUR.**

**Match-All™ Graining Liquid 1/2 oz.**



M462-2010 - Color A



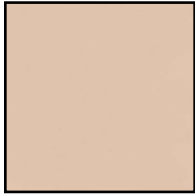
M462-2020 - Color B



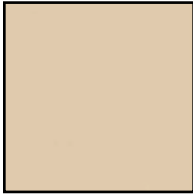
M462-2030 - Color C



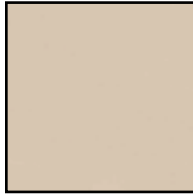
M462-2040 - Color D



**Color #104**  
Mix: #1 12 drops  
#3 1 drop  
#6 2 drops



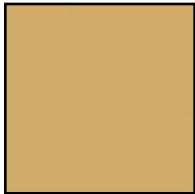
**Color #106**  
Mix: #1 5 drops  
#2 1 drop  
#7 1 drop



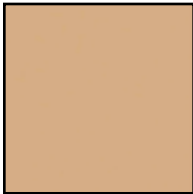
**Color #108**  
Mix: #1 12 drops  
#3 1 drop  
#7 2 drops



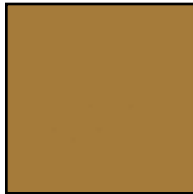
**Color #114**  
Mix: #1 15 drops  
#2 2 drops  
#7 1 drop  
#9 1 drop



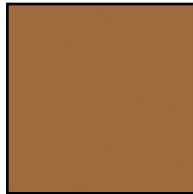
**Color #115**  
Mix: #1 6 drops  
#2 4 drops  
#3 2 drops  
#6 1 drop  
#7 1 drop



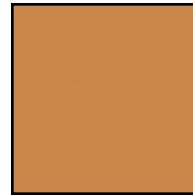
**Color #119**  
Mix: #1 3 drops  
#3 1 drop  
#6 1 drop



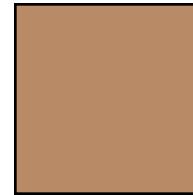
**Color #121**  
Mix: #2 6 drops  
#3 2 drops  
#6 1 drop  
#7 1 drop



**Color #123**  
Mix: #3 7 drops  
#4 2 drops  
#7 1 drop



**Color #125**  
Mix: #1 1 drop  
#3 4 drops  
#4 1 drop



**Color #127**  
Mix: #1 3 drops  
#3 2 drops  
#4 1 drop  
#6 1 drop



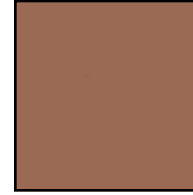
**Color #133**  
Mix: #1 2 drops  
#2 6 drops  
#3 1 drop  
#6 1 drop  
#7 2 drops



**Color #138**  
Mix: #3 2 drops  
#4 1 drop  
#6 3 drops



**Color #140**  
Mix: #1 2 drops  
#3 2 drops  
#4 3 drops  
#7 2 drops



**Color #142**  
Mix: #1 2 drops  
#5 1 drop  
#6 7 drops



**Color #146**  
Mix: #2 3 drops  
#6 4 drops  
#7 4 drops



**Color #148**  
Mix: #1 1 drop  
#3 1 drop  
#4 6 drops  
#6 2 drops



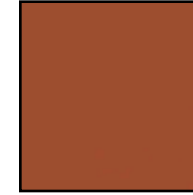
**Color #150**  
Mix: #4 1 drop  
#5 2 drops  
#7 3 drops



**Color #152**  
Mix: #3 1 drop  
#4 2 drops  
#6 3 drops  
#7 2 drops



**Color #154**  
Mix: #1 1 drop  
#7 9 drops



**Color #156**  
Mix: #3 1 drop  
#4 6 drops  
#6 1 drop



**Color #159**  
Mix: #4 6 drops  
#5 1 drop  
#6 6 drops



**Color #163**  
Mix: #4 7 drops  
#5 5 drops  
#6 1 drop



**Color #170**  
Mix: #4 1 drop  
#6 4 drops



**Color #172**  
Mix: #4 1 drop  
#5 1 drop  
#6 9 drops